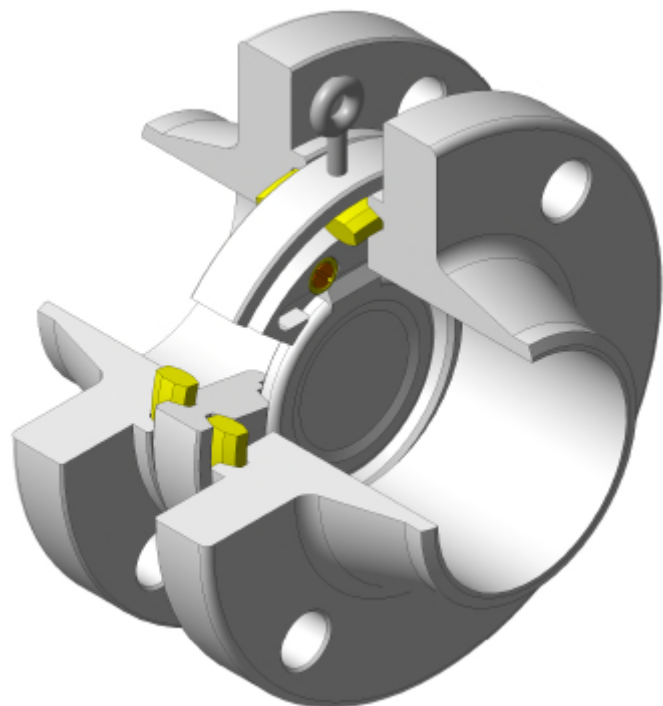


**new product**

**SM-R10-RJ**

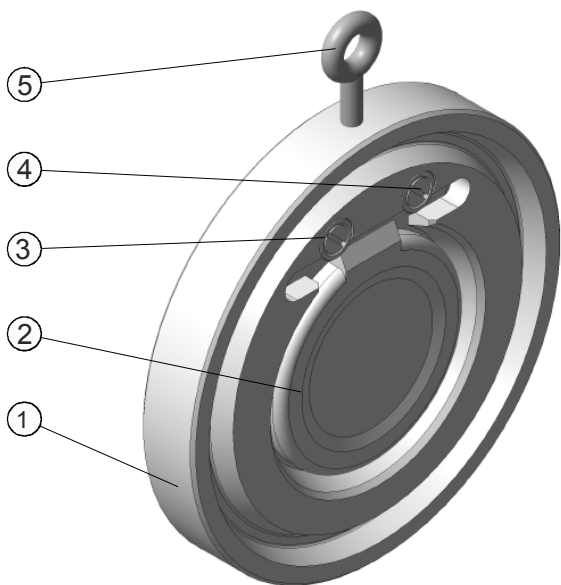
**Valvola di ritegno a clapet  
Ring-Joint**



- Nuovo disegno
- Pressione d'esercizio max. 425 bar
- Scartamento a norma API 6D
- Predisposta per montaggio tra flange con collari ring joint
- Classi dimensionali, ANSI 150 ÷ ANSI 2500
- Montaggio tra flange, ANSI 150 ÷ ANSI 2500
- Materiali standard, Acc. Carbonio e Acc. Inox
- Ampia scelta di materiali speciali

- Nuovo disegno
- Pressione d'esercizio max. 425 bar
- Scartamento a norma API 6D
- Predisposta per montaggio tra flange con collari ring joint
- Classi dimensionali, ANSI 150 ÷ ANSI 2500
- Montaggio tra flange, ANSI 150 ÷ ANSI 2500
- Materiali standard, Acc. Carbonio e Acc. Inox
- Ampia scelta di materiali speciali

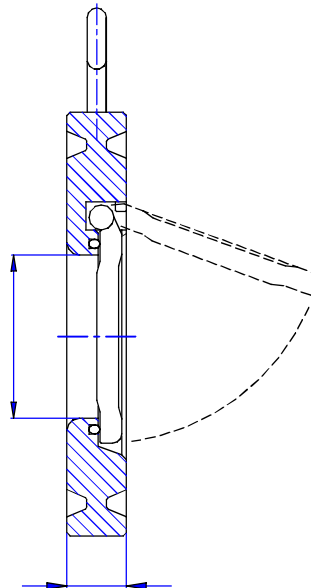
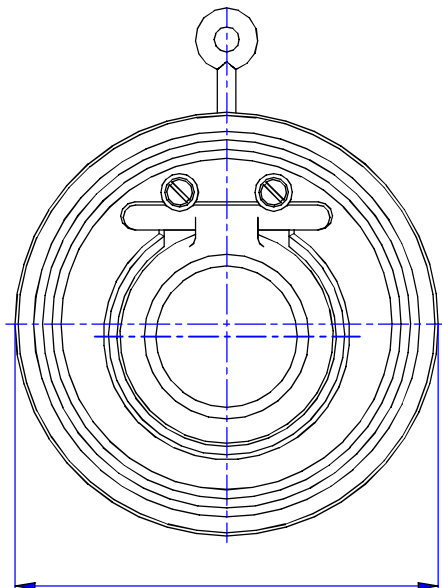
**Componenti e materiali - Components and materials**



Configurazione / Configuration

Item	Denominazione	Acc. Carbonio / Carbon Steel	Acc. Inox / Stainless Steel	Q.ty
1	Corpo / Body	ASTM A105	AISI 316	1
2	Battente / Clapet	ASTM A105	AISI 316	1
3	Rondella / Washer	ASTM A105	AISI 316	2
4	Vite / Screw	class 8.8 nickel plated	Stainless Steel A2	2
5	Golfaro / Lifting eye bolt	class 8.8 nickel plated	class 8.8 nickel plated	1

**Dimensioni - Dimensions**



Classe / Class: ANSI 150 (PN25)			
DN	S	Ø A	Ø B
50			
65			
80			
100			
125			
150			
200			
250			
300			

Classe / Class: ANSI 300 (PN50)			
DN	S	Ø A	Ø B
50			
65			
80			
100			
125			
150			
200			
250			
300			

Classe / Class: ANSI 400 (PN65)			
DN	S	Ø A	Ø B
50			
65			
80			
100			
125			
150			
200			
250			
300			

Classe / Class: ANSI 600 (PN100)			
DN	S	Ø A	Ø B
50			
65			
80			
100			
125			
150			
200			
250			
300			

Classe / Class: ANSI 900 (PN150)			
DN	S	Ø A	Ø B
50			
65			
80			
100			
125			
150			
200			
250			
300			

Classe / Class: ANSI 1500 (PN250)			
DN	S	Ø A	Ø B
50			
65			
80			
100			
125			
150			
200			
250			
300			

Classe / Class: ANSI 2500 (PN420)			
DN	S	Ø A	Ø B
50			
65			
80			
100			
125			
150			
200			
250			
300			

(\*) Dimensione in accordo alla norma UNI EN 558 serie 98  
Dimension in compliance with the rule UNI EN 558 basic series 98